

**MAKE A DONATION TO  
HONOR A LOVED ONE**

Making a donation to The Exceller Fund in memory of a loved one or pet, or to recognize your loved one on a special occasion, is a wonderful way to honor him or her. If you would like to contribute in this way, please fill out the form below. Your recipient will receive an acknowledgement of your caring gift.

One-time donation \$ \_\_\_\_\_

\_\_\_\_\_ In Loving Memory of / or To Honor (circle one)

\_\_\_\_\_ Donor Name

\_\_\_\_\_ Street Address

\_\_\_\_\_ City, State, Zip

\_\_\_\_\_ E-mail Address

**Make your check payable to:**  
The Exceller Fund, Inc.

**Mail your check with this form to:**  
The Exceller Fund, Inc.  
P.O. Box 33274  
Granada Hills, CA 91394

Remember, your gift is tax-deductible.  
Federal Tax ID #75-2937532

**THANK YOU!**

Out here

**EXCELLER'S EASTER**

*He was unraced, untrained, unbroke, unnamed,  
unregistered and unwanted.*

*He was rescued by The Exceller Fund on  
Easter Sunday.*

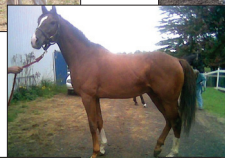
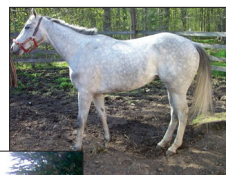


The tale of a young Thoroughbred named Exceller's Easter is a perfect example of how The Exceller Fund works with many other groups to save the lives of horses in need.

The Exceller Fund was contacted by CANTER about an unwanted Thoroughbred gelding that was scheduled to be sold for slaughter. On Easter Sunday 2004, The Exceller Fund made arrangements to send the horse to Bethlehem Farm in Kentucky for care and rehab.

One year later, The Exceller Fund sent the handsome gelding to ReRun to help find an adoptive home. Exceller's Easter or "Jelly Bean" has been adopted into a loving home in Tennessee.

Here are other horses that were given a second chance by The Exceller Fund:



*Clockwise from top left: Upon The Roof, Sully's Silver, Missy Won, Top Encounter. Center: Spectacular Won.*



PROVIDING A FUTURE BEYOND THE FINISH LINE <sup>SM</sup>



THE EXCELLER FUND PRESENTS  
RICH IN DALLAS AKA SEABISCUIT



Rich in Dallas does not have a fancy pedigree and did not win stakes races, but he is typical of the hard-trying horses that compete in the lower levels of racing known as "claiming" races.

When their racing careers are over, many of these horses are suitable for a second career.

The Exceller Fund makes this possible.

[www.excellerfund.org](http://www.excellerfund.org)  
[mail@excellerfund.org](mailto:mail@excellerfund.org)

## EXCELLER

VAGUELY NOBLE – TOO BALD  
1973 - 1997



Exceller – Photo courtesy of Thoroughbred Times

**E**xceller was a Champion of the 1970's racing era. Trained by legendary Charlie Whittingham and ridden by none other than Bill Shoemaker, Exceller competed and won at the top levels in racing.

Exceller holds the distinction of defeating two Triple Crown winners in a single race when he came from 22 lengths back to defeat Seattle Slew and Affirmed in the thrilling 1978 Jockey Club Gold Cup. Exceller also won such prestigious races as the Hollywood Gold Cup, Hollywood Invitational Turf Handicap, San Juan Capistrano, Sunset Handicap, and the Oak Tree Invitational.

Exceller was retired in 1979 and was later sold overseas in 1991. He was nominated to Racing's Hall of Fame in April 1997, just a few days after his death on April 7, 1997 in a slaughterhouse.

News of his death led a number of racing fans to join together to form The Exceller Fund in his memory. To honor the legacy of Exceller, we help horses that face the same fate as Exceller.



Photo by Lydia Williams –  
www.theshedrow.com

## THE EXCELLER FUND – WHO WE ARE

The Exceller Fund consists of people who are racing fans and horse lovers who want to make a difference. While the cost to support one horse may be too much for a single person, by combining our resources, we are able to help many horses.

## THE EXCELLER FUND – WHAT WE DO

The Exceller Fund rescues Thoroughbreds that would otherwise be sent to slaughter. We are unique in that we do not own a facility of our own, and instead work with other organizations and private foster care. We pay various expenses for them to provide the care and handling these horses need.

The Exceller Fund also assists other organizations with their rescue, rehabilitation, adoption, and retirement efforts. We collaborate with other groups when the need is great.



*Superhappycombo was scheduled to be sold to slaughter. He has been adopted into a permanent home.*

## THE EXCELLER FUND – HOW YOU CAN HELP

Join The Exceller Fund! Membership is available for as low as \$15 per month. Members receive updates on the horses and activities of The Exceller Fund and get to feel like a part of a community that owns many horses. If you feel membership is not for you, one-time donations are always appreciated and needed.



*Precision Winner Despite racing 138 times, this 9-year old gelding had no future until The Exceller Fund secured him.*

## SIGN-UP FOR MEMBERSHIP OR MAKE A ONE-TIME DONATION

Sign up for:	Donation
<input type="checkbox"/> Membership - start with 1 month	\$ 15.00
<input type="checkbox"/> Membership - start with 3 months	\$ 45.00
<input type="checkbox"/> Membership - start with 6 months	\$ 90.00
<input type="checkbox"/> Membership - 1 year	\$ 180.00
<input type="checkbox"/> One-time donation	\$ _____
	Total \$ _____

Name \_\_\_\_\_

Street Address \_\_\_\_\_

City \_\_\_\_\_

State \_\_\_\_\_

Zip \_\_\_\_\_

E-mail Address \_\_\_\_\_

**Make your check payable to:**  
The Exceller Fund, Inc.

**Mail your check with this form to:**  
The Exceller Fund, Inc.  
P.O. Box 33274  
Granada Hills, CA 91394



**The Exceller Fund can also accept donations made by:**

- **PayPal** - send to [donate@excellerfund.org](mailto:donate@excellerfund.org).  
[www.paypal.com](http://www.paypal.com)
- **Credit Card** - You can make a credit card donation from our Gift Shop by clicking on the Main Menu and then selecting Tax Deductible Donations.  
[www.excellerfund.org/giftshop.htm](http://www.excellerfund.org/giftshop.htm)
- If you have an American Express Card, you can donate through the American Express JustGive program at [www.americanexpress.com/give](http://www.americanexpress.com/give)
- You can also pay your membership by automatic charge to a credit card. Send an e-mail to: [donate@excellerfund.org](mailto:donate@excellerfund.org) for more information.

Federal Tax ID #75-2937532

Cut here